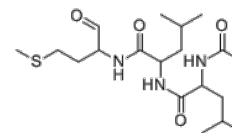


**Product Name** : ALLM  
**Cat. No.** : PC-70124  
**CAS No.** : 136632-32-1  
**Molecular Formula** : C<sub>19</sub>H<sub>35</sub>N<sub>3</sub>O<sub>4</sub>S  
**Molecular Weight** : 401.57  
**Target** : Calpain  
**Solubility** : 10 mM in DMSO



## Biological Activity

ALLM (Ac-Leu-Leu-Met-CHO) is a potent, cell-permeable **calpain** inhibitor with K<sub>i</sub> of 0.6 and 100 nM for calpain L and calpain B, respectively.

ALLM inhibits the activities of Ca(2+)-dependent neutral proteases as well as lysosomal proteases, including cathepsin L, cathepsin B, and cathepsin D.

ALLM induces apoptosis in rat pituitary tumor cells by specific caspase activation.

## References

Neumann D, et al. Biochem J. 1996 Jan 15;313 ( Pt 2):391-9.

Inoue S, et al. J Biol Chem. 1991 Jul 15;266(20):13311-7.

Yu R, et al. J Endocrinol. 2002 Sep;174(3):379-86.

**Caution: Product has not been fully validated for medical applications. Lab Use Only!**

E-mail: tech@probechem.com